

# Octavia House

Imperial Wharf, London SW6

**£695 per week      Unfurnished**



*A fabulous, 2 bed, 2 bath, 5<sup>th</sup> floor apartment with a south-westerly aspect and skyline views over west London which comprises 964 sq ft. Floor-to-ceiling windows provide wonderful light and there is a sunny balcony. Imperial Wharf is an award-winning development with restaurants & a vibrant riverside pub & Imperial Wharf station is only a 2 minute walk.*



*As previously furnished*

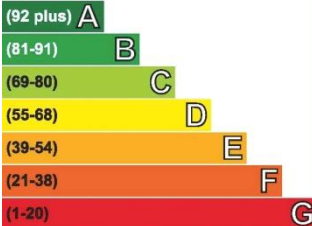


Entrance Hall • Reception / Open Plan Kitchen • 2 Double Bedrooms • Shower Room (En Suite)  
Guest Bathroom • Balcony • Comfort Cooling (Heating & Cooling)  
Video Entry Telephone • Lift • 24 Hour Concierge & Security Service • Free Residents' Gym



### Energy Efficiency Rating

Very energy efficient - lower running costs

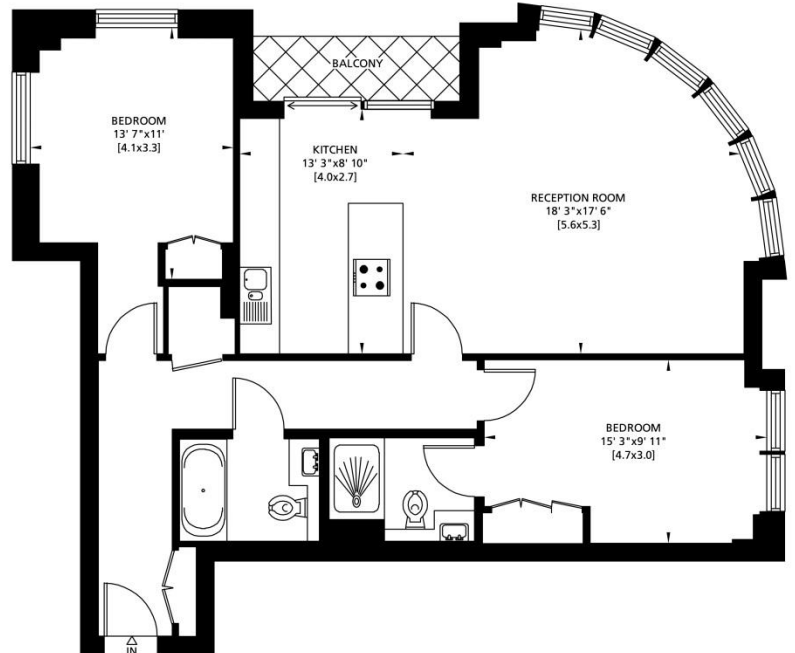


Not energy efficient - higher running costs

Current	Potential
88	89



Gross Internal Area: 90 Sq. metres  
964 Sq. feet



FIFTH FLOOR

### Imperial Wharf Amenities:

- Riverside Walk • Secure Underground Parking Facilities
- Double Tree by Hilton • Inn Fusion Restaurant and Bar
- Waterside Pub • Restaurants • Residents' Gym • Laundry Service
- 24 Hour Concierge and Security Service

### Local Transport Links:

- Imperial Wharf Station (Overground)
- Under 15 minutes walk to Fulham Broadway (District)
- C3, 391 from Imperial Wharf; 424, 22 & 14 within a short walk
- Within easy reach of the Kings Road
- Imperial Wharf Taxi Hail Point
- River Taxi at Chelsea Harbour Pier

**IMPORTANT NOTICE:** Harbour Estates Limited, its clients and any joint agents give notice that they have no authority to make or give any representations or warranties in relation to this property either here or elsewhere, either on their own behalf or on behalf of their client or otherwise. They assume no responsibility for any statement that may be made in these particulars. These particulars do not form part of any offer or contract and must not be relied upon as statements or representations of fact. Any areas, measurements or distances are approximate. The text, photographs and plans are for guidance only. It should not be assumed that the property has all necessary planning, building regulation or other consents and Harbour Estates Limited has not tested any services, equipment or facilities. A buyer or lessee must satisfy themselves by inspection or otherwise. The copyright of all details, photographs and floor plans remain exclusive to Harbour Estates Limited.