

Counter House

Chelsea Creek, London SW6

£1,200,000



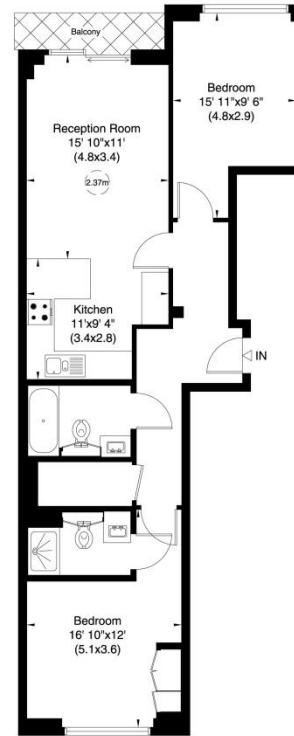
A fabulous, 2 bed, 4th floor apartment located in the heart of London's newest dockside development. The property is decorated in neutral style and has access to superb onsite facilities including a spa, fitness centre, swimming pool, treatment rooms, steam room and sauna. Imperial Wharf overground is a 2/3 minute walk with links into the underground system at West Brompton (District Line) and Shepherds Bush (Central Line).



Entrance Hall • Open Plan Kitchen • Reception Room • 2 Double Bedrooms • 1 En Suite Shower Room
Guest Bathroom • Balcony • Comfort Cooling (Heating & Cooling) • Residents-only Spa • Swimming Pool
Gym • Saunas • Steam Room • Video Entry Telephone • Lift • 24 Hour Concierge & Security Service
To include: Carpets • Kitchen Appliances & Laundry Equipment • Standard Light Fittings

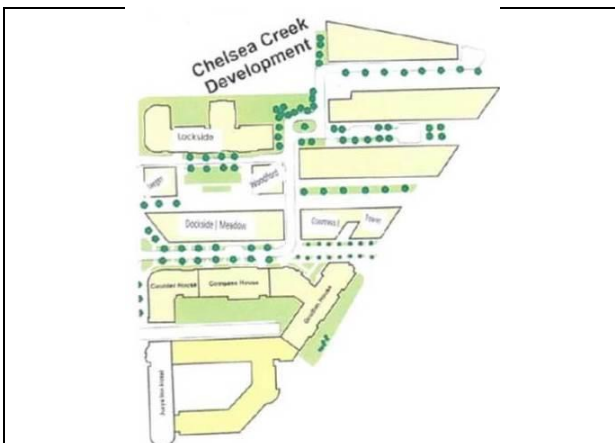
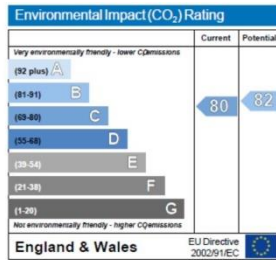
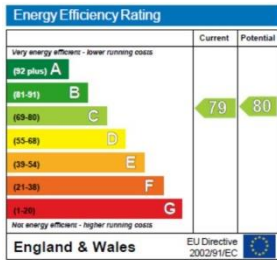


Gross internal area (approx.)
73 Sq m (790 Sq ft)
For identification only, Not to Scale



Fourth Floor

Not to scale, for guidance only and must not be relied upon as a statement of fact. All measurements and areas are approximate only (and have been prepared in accordance with the current edition of the RICS Code of Measuring Practice).



Lease: 999 years from January 2010
Local Authority: London Borough of Hammersmith & Fulham

Chelsea Creek Amenities:

- Dockside & Garden Walks • Secure Underground Parking Facilities
- Shops, Bars & Restaurants (nearby in Imperial Wharf)
- DoubleTree by Hilton Hotel Chelsea
- Inn Fusion Restaurant and Bar
- Fitness Centre • Swimming Pod • Sauna & Steam Room
- Treatment Rooms • 24 hour Concierge and Security Service

Local Transport Links:

- Imperial Wharf Station (Overground)
- Under 15 minutes walk to Fulham Broadway (District)
- C3, 391 from Imperial Wharf, 424, 22 & 14 within a short walk
- Within easy reach of the Kings Road
- Imperial Wharf Taxi Hail Point
- River Taxi at Chelsea Harbour Pier

IMPORTANT NOTICE: Harbour Estates Limited, its clients and any joint agents give notice that they have no authority to make or give any representations or warranties in relation to this property either here or elsewhere, either on their own behalf or on behalf of their client or otherwise. They assume no responsibility for any statement that may be made in these particulars. These particulars do not form part of any offer or contract and must not be relied upon as statements or representations of fact. Any areas, measurements or distances are approximate. The text, photographs and plans are for guidance only. It should not be assumed that the property has all necessary planning, building regulation or other consents and Harbour Estates Limited has not tested any services, equipment or facilities. A buyer or lessee must satisfy themselves by inspection or otherwise. The copyright of all details, photographs and floor plans remain exclusive to Harbour Estates Limited.