

# The Belvedere

Chelsea Harbour, London SW10

**£3,700,000**



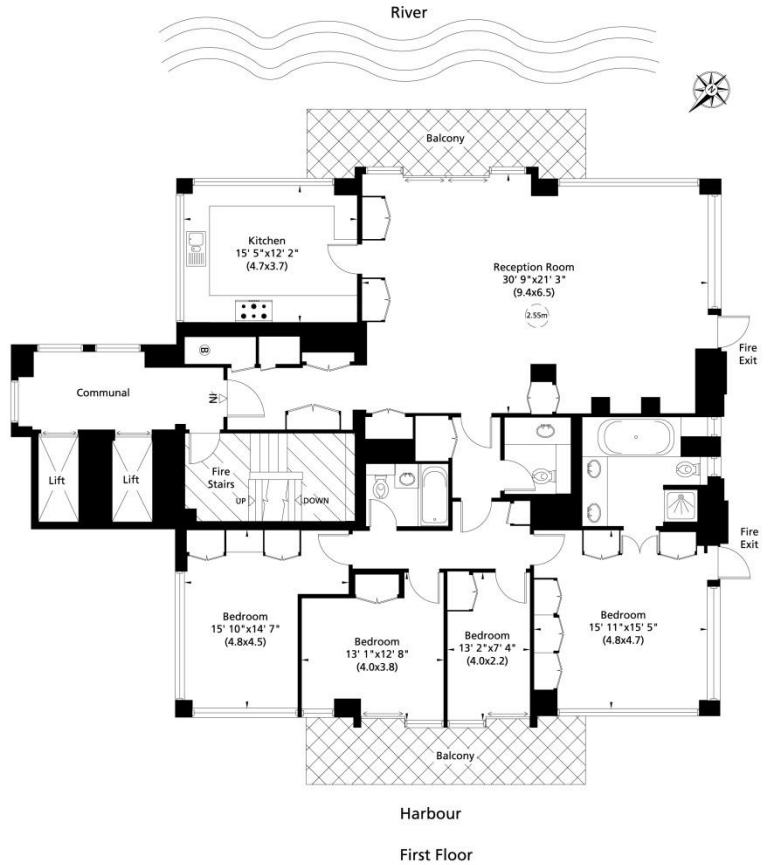
*A beautiful, bright and serene 4 bedroom apartment occupying the whole of the 1<sup>st</sup> floor in the highly sought-after Belvedere building. The apartment is decorated in neutrals throughout with all living rooms having extensive views of the river or the yacht marina. The Belvedere is the focal point of Chelsea Harbour and is one of London's great landmark buildings. 24 hour porters provide helpful, discreet service and the property comes with 2 secure underground car park spaces.*



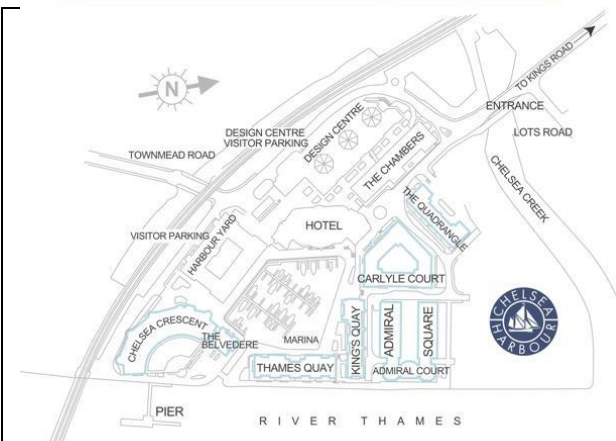
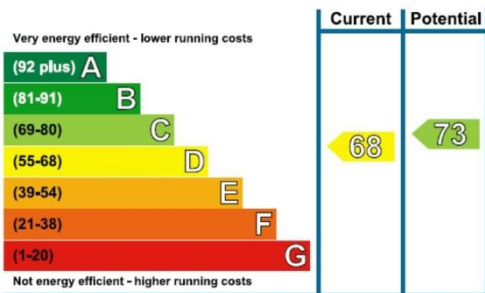
Entrance Hall • Reception / Dining Room • Kitchen • Guest Cloakroom • 3 Double Bedrooms  
1 Single Bedroom • 1 En Suite Shower / Bathroom • Guest Bathroom • Two Balconies • Lift  
Video Entry Telephone • 2 Underground Parking Spaces • 24 Hour Portage & Site Security  
To include: Carpets • Curtains • Kitchen Fittings, Appliances & Laundry Equipment  
Standard Light Fittings



Gross internal area (approx.)  
188 Sq m (2027 Sq ft)  
Balcony area (approx.)  
26 Sq m (275 Sq ft)



### Energy Efficiency Rating



Lease: 125 years from March 1987

Local Authority: London Borough of Hammersmith & Fulham

### Chelsea Harbour Amenities:

Riverside Walk • Secure Underground Parking Facilities  
5-Star The Chelsea Harbour Hotel • Blue Harbour Spa  
Chelsea Riverside Brasserie & Bar • Marina • Hairdressing  
Convenience Store • Marcos • Excellent Security

### Local Transport Links:

Imperial Wharf Station (Overground)  
 Under 15 minutes walk to Fulham Broadway (District)  
 C3 to Chelsea Harbour; 11, 22 & 14 within a short walk  
 Within easy reach of the Kings Road and Embankment  
 Taxi Rank at the The Chelsea Harbour Hotel  
 River Taxi at Chelsea Harbour Pier

**IMPORTANT NOTICE:** Harbour Estates Limited, its clients and any joint agents give notice that they have no authority to make or give any representations or warranties in relation to this property either here or elsewhere, either on their own behalf or on behalf of their client or otherwise. They assume no responsibility for any statement that may be made in these particulars. These particulars do not form part of any offer or contract and must not be relied upon as statements or representations of fact. Any areas, measurements or distances are approximate. The text, photographs and plans are for guidance only. It should not be assumed that the property has all necessary planning, building regulation or other consents and Harbour Estates Limited has not tested any services, equipment or facilities. A buyer or lessee must satisfy themselves by inspection or otherwise. The copyright of all details, photographs and floor plans remain exclusive to Harbour Estates Limited.