

# The Belvedere

Chelsea Harbour, London SW10

**£3,300,000**



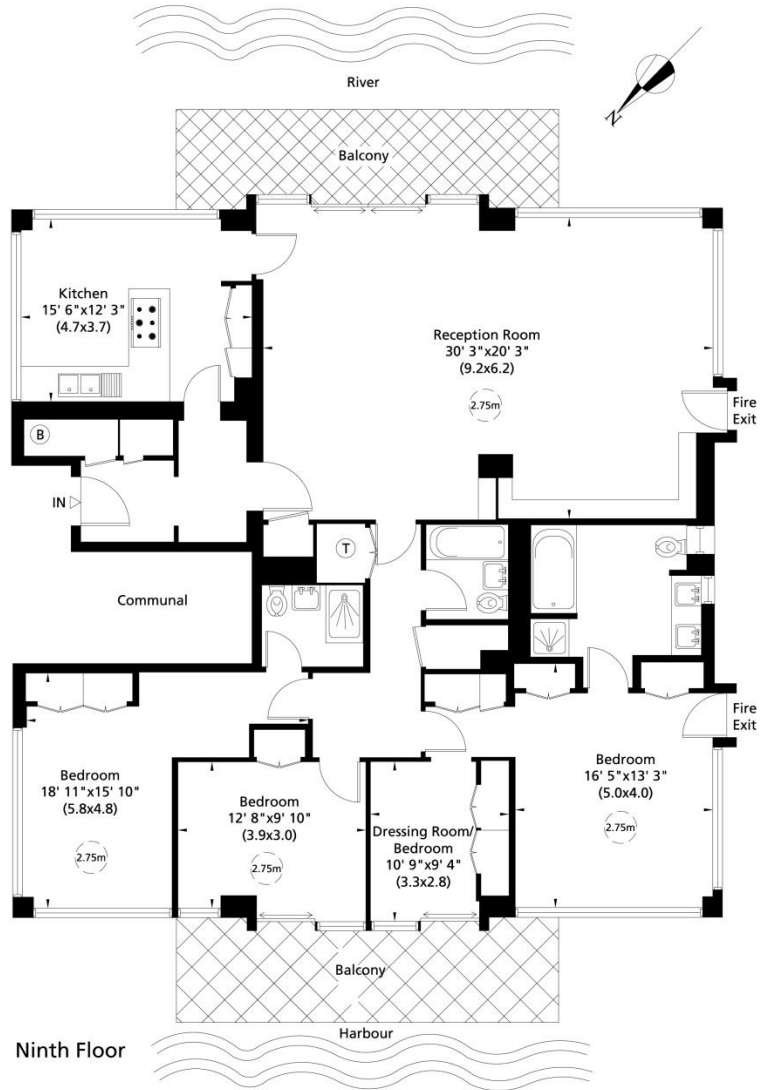
*An opportunity to acquire an original 4 bedroom apartment occupying the whole of the 9<sup>th</sup> floor in the highly sought-after Belvedere building. The property has far-reaching, sensational, 360 degree panoramic views over the river, the marina and the London skyline. The Belvedere is the focal point of Chelsea Harbour and is one of London's great landmark buildings. This property last came to the market 25 years ago and comes with 1 underground car park space.*



Entrance Hall • Reception Room • Kitchen • 3 Double Bedrooms • Dressing Room/Single Bedroom  
Guest Bathroom • En Suite Bathroom • En Suite Shower Room • Two Balconies • 2 Lifts  
Video Entry Telephone • 1 Underground Parking Space • 24 Hour Porterage & Site Security  
To include: Carpets • Curtains • Kitchen Fittings, Appliances & Laundry Equipment  
Standard Light Fittings

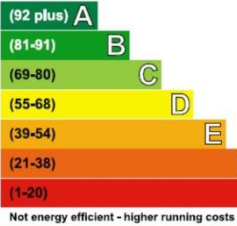


Gross internal area (approx.)  
186 Sq m (2003 Sq ft)

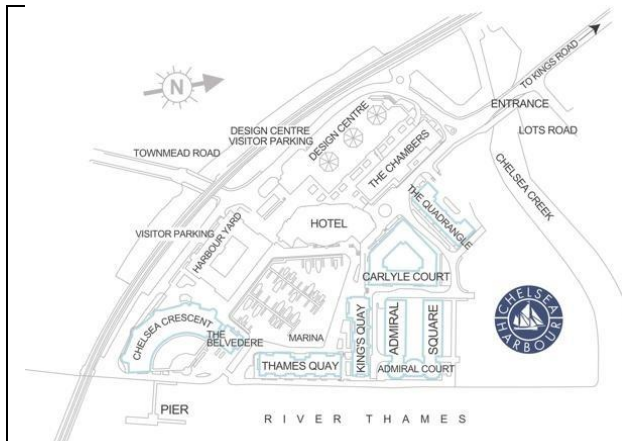


**Energy Efficiency Rating**

Very energy efficient - lower running costs



Current	Potential
81	81



**Lease:** 125 years from March 1987  
**Local Authority:** London Borough of Hammersmith & Fulham

**Chelsea Harbour Amenities:**

- Riverside Walk • Secure Underground Parking Facilities
- 5-Star The Chelsea Harbour Hotel • Blue Harbour Spa
- Chelsea Riverside Brasserie & Bar • Marina • Hairdressing
- Convenience Store • Marcos • Excellent Security

**Local Transport Links:**

- Imperial Wharf Station (Overground)
- Under 15 minutes walk to Fulham Broadway (District)
- C3 to Chelsea Harbour; 11, 22 & 14 within a short walk
- Within easy reach of the Kings Road and Embankment
- Taxi Rank at the The Chelsea Harbour Hotel
- River Taxi at Chelsea Harbour Pier

**IMPORTANT NOTICE:** Harbour Estates Limited, its clients and any joint agents give notice that they have no authority to make or give any representations or warranties in relation to this property either here or elsewhere, either on their own behalf or on behalf of their client or otherwise. They assume no responsibility for any statement that may be made in these particulars. These particulars do not form part of any offer or contract and must not be relied upon as statements or representations of fact. Any areas, measurements or distances are approximate. The text, photographs and plans are for guidance only. It should not be assumed that the property has all necessary planning, building regulation or other consents and Harbour Estates Limited has not tested any services, equipment or facilities. A buyer or lessee must satisfy themselves by inspection or otherwise. The copyright of all details, photographs and floor plans remain exclusive to Harbour Estates Limited.