

Thames Quay

Chelsea Harbour, London SW10

£1,200 per week Unfurnished



Harbour
Estates

5 Design Centre East Chelsea Harbour London SW10 0XF
020 7351 2300 harbourestates.co.uk

A fabulous, 3 bed, 2 bath apartment which has just been refurbished throughout. Located on the 2nd floor, the property has a triple aspect and wonderful natural light. The sitting room and kitchen have glorious river views and all three bedrooms to the rear have peaceful views over the yacht marina. Imperial Wharf overground, which links to the underground at West Brompton (District Line), is a short walk.

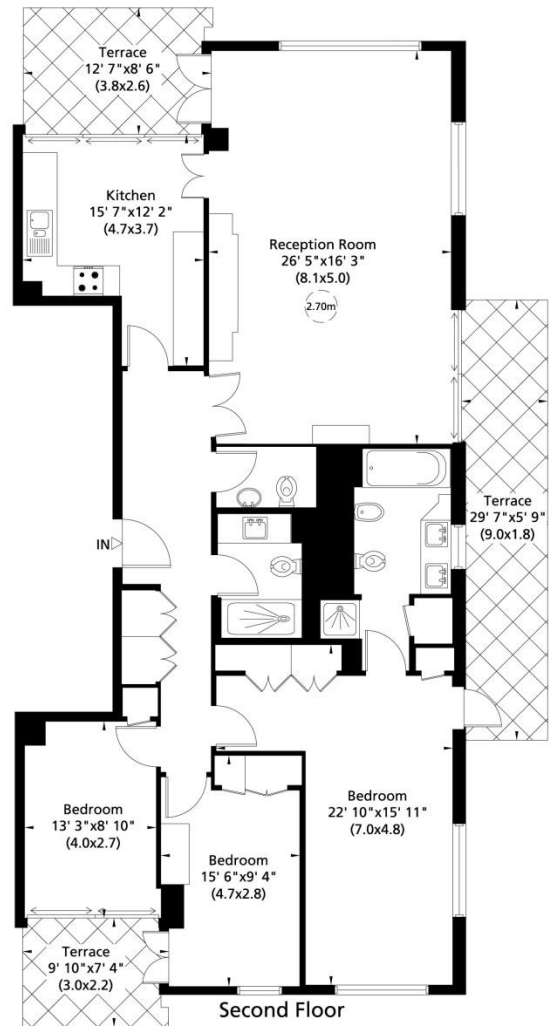


Entrance Hall • Cloakroom • Kitchen • Reception Room • 3 Double Bedrooms
En Suite Bath/Shower Room • Guest Shower Room • 3 Balconies • Lift • Video Entry Telephone
1 Underground Parking Space • 12 hour Weekday Portage • 24 Hour Site Security



Gross internal area (approx.)
140 Sq m (1506 Sq ft)

River

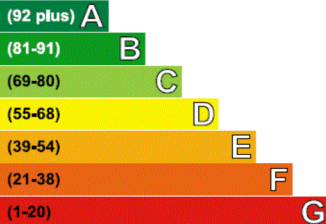


Harbour

Not to scale, for guidance only and must not be relied upon as a statement of fact. All measurements and areas are approximate only (and have been prepared in accordance with the current edition of the RICS Code of Measuring Practice).

Energy Efficiency Rating

Very energy efficient - lower running costs



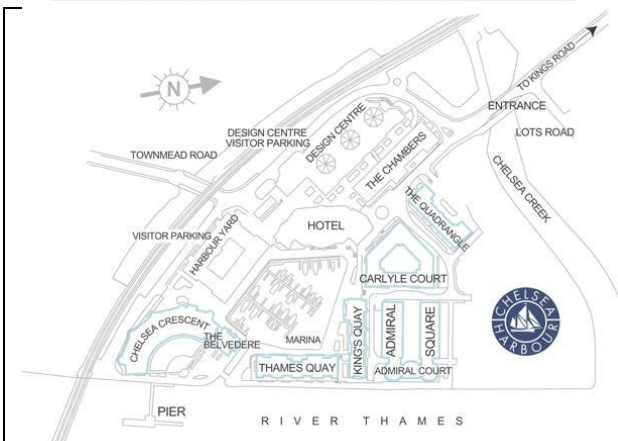
Current	Potential
79	79

Chelsea Harbour Amenities:

- Riverside Walk • Secure Underground Parking Facilities
- 5-Star The Chelsea Harbour Hotel • Blue Harbour Spa
- Chelsea Riverside Brasserie & Bar • Marina • Hairdressing
- Convenience Store • Marcos • Excellent Security

Local Transport Links:

- Imperial Wharf Station (Overground)
- Under 15 minutes walk to Fulham Broadway (District)
- C3 to Chelsea Harbour; 11, 22 & 14 within a short walk
- Within easy reach of the Kings Road and Embankment
- Taxi Rank at the The Chelsea Harbour Hotel
- River Taxi at Chelsea Harbour Pier



IMPORTANT NOTICE: Harbour Estates Limited, its clients and any joint agents give notice that they have no authority to make or give any representations or warranties in relation to this property either here or elsewhere, either on their own behalf or on behalf of their client or otherwise. They assume no responsibility for any statement that may be made in these particulars. These particulars do not form part of any offer or contract and must not be relied upon as statements or representations of fact. Any areas, measurements or distances are approximate. The text, photographs and plans are for guidance only. It should not be assumed that the property has all necessary planning, building regulation or other consents and Harbour Estates Limited has not tested any services, equipment or facilities. A buyer or lessee must satisfy themselves by inspection or otherwise. The copyright of all details, photographs and floor plans remain exclusive to Harbour Estates Limited.