

# Thames Quay

Chelsea Harbour, London SW10

**£1,100 per week      Furnished**



Harbour  
Estates

5 Design Centre East Chelsea Harbour London SW10 0XF  
020 7351 2300 [harbourestates.co.uk](http://harbourestates.co.uk)

*A beautiful, interior-designed, three bed, raised-ground floor apartment, which benefits from one underground parking space and two decked terraces, one overlooking the river, the other with views to the Marina. The apartment is light, bright and offers exceptional views of the river from the reception room as well as views of the marina from all three bedrooms.*



*As previously furnished*

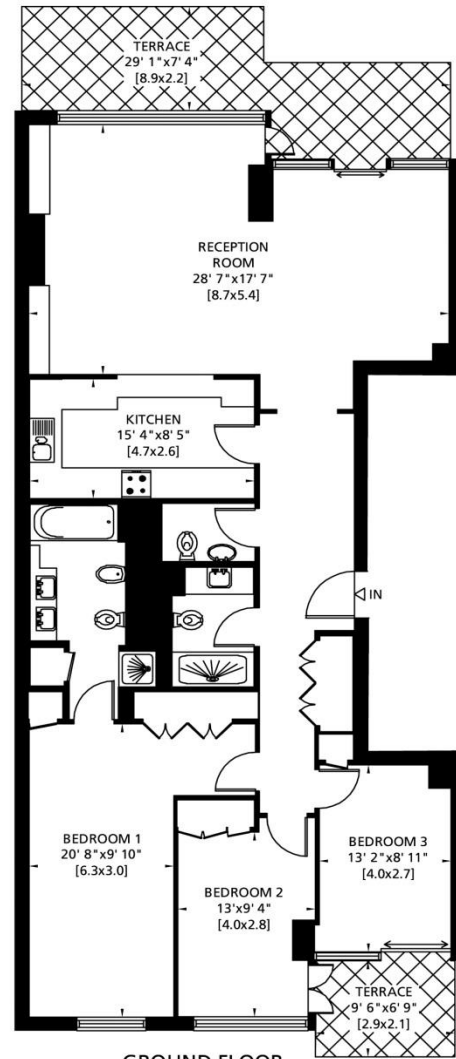


Entrance Hall • Cloakroom • Kitchen • Reception Room • 3 Double Bedrooms  
2 Bathrooms (1 En Suite) • Balcony • Terrace • Lift • Video Entry Telephone  
1 Underground Parking Space • 12 hour Weekday Portage • 24 Hour Site Security



Gross Internal Area: 141 Sq. metres  
1519 Sq. feet

Terrace Area: 26 Sq. metres  
276 Sq. feet



HARBOUR

Energy Efficiency Rating		Environmental Impact (CO <sub>2</sub> ) Rating	
Current	Potential	Current	Potential
A	A	A	A
B	B	B	B
C	C	C	C
D	D	D	D
E	E	E	E
F	F	F	F
G	G	G	G

Very energy efficient - lower running costs (82 plus) **82** **85**

Very environmentally friendly - lower CO<sub>2</sub> emissions (84 plus) **84** **85**

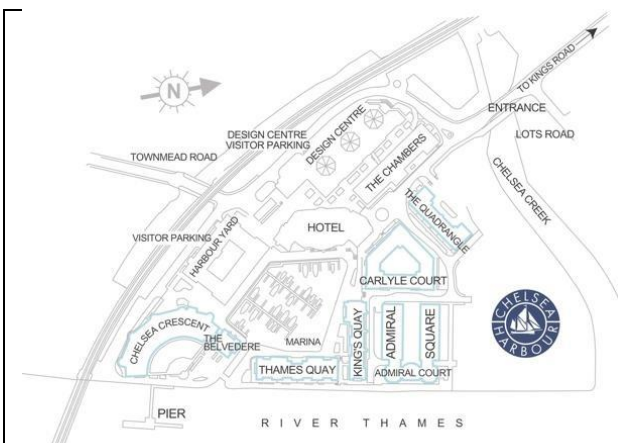
England & Wales EU Directive 2002/91/EC

### Chelsea Harbour Amenities:

- Riverside Walk • Secure Underground Parking Facilities
- 5-Star The Chelsea Harbour Hotel • Blue Harbour Spa
- Chelsea Riverside Brasserie & Bar • Marina • Hairdressing
- Convenience Store • Marcos • Excellent Security

### Local Transport Links:

- Imperial Wharf Station (Overground)
- Under 15 minutes walk to Fulham Broadway (District)
- C3 to Chelsea Harbour; 11, 22 & 14 within a short walk
- Within easy reach of the Kings Road and Embankment
- Taxi Rank at the The Chelsea Harbour Hotel
- River Taxi at Chelsea Harbour Pier



**IMPORTANT NOTICE:** Harbour Estates Limited, its clients and any joint agents give notice that they have no authority to make or give any representations or warranties in relation to this property either here or elsewhere, either on their own behalf or on behalf of their client or otherwise. They assume no responsibility for any statement that may be made in these particulars. These particulars do not form part of any offer or contract and must not be relied upon as statements or representations of fact. Any areas, measurements or distances are approximate. The text, photographs and plans are for guidance only. It should not be assumed that the property has all necessary planning, building regulation or other consents and Harbour Estates Limited has not tested any services, equipment or facilities. A buyer or lessee must satisfy themselves by inspection or otherwise. The copyright of all details, photographs and floor plans remain exclusive to Harbour Estates Limited.