

# The Quadrangle

Chelsea Harbour, London SW10

**£750 per week**

**Furnished**



Harbour  
Estates

5 Design Centre East Chelsea Harbour London SW10 0XF  
020 7351 2300 [harbourestates.co.uk](http://harbourestates.co.uk)

*A fabulous, contemporary-styled 2 bed, first floor apartment with a striking open-plan reception room/kitchen. Beautiful double-aspect windows provide exceptional natural light and both bedrooms are generously proportioned with good storage throughout. The property comes with one secure underground car park space. Imperial Wharf over ground station is a five minute walk away with access to the London Underground system at West Brompton (District Line).*

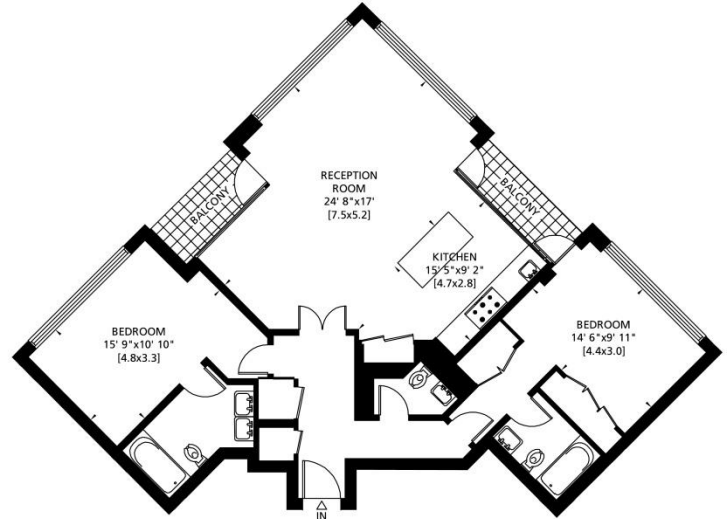


Entrance Hall • Open Plan Reception Room / Kitchen • 2 Double Bedrooms • 2 Bathrooms (En Suite)  
Guest Cloakroom • 2 Balconies • Lift • Video Entry Telephone • 1 Underground Parking Space  
12 hour Weekday Portage • 24 Hour Site Security



Gross Internal Area: 112 Sq. metres  
1207 Sq. feet

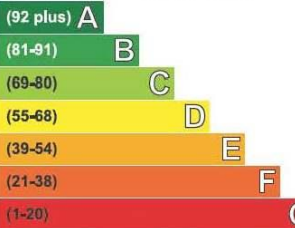
Balcony Area: 8 Sq. metres  
86 Sq. feet



FIRST FLOOR

### Energy Efficiency Rating

Very energy efficient - lower running costs



Not energy efficient - higher running costs

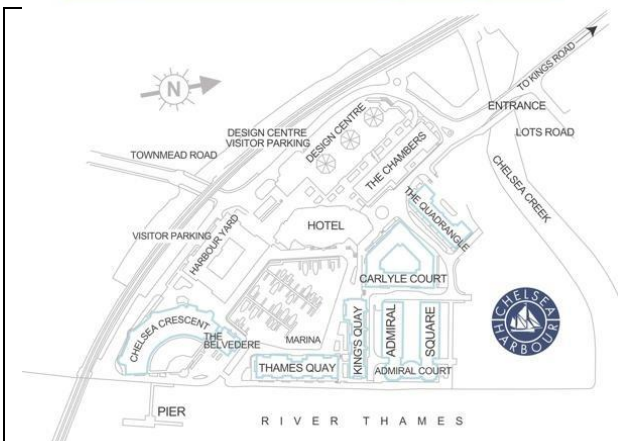
Current	Potential
79	81

### Chelsea Harbour Amenities:

- Riverside Walk • Secure Underground Parking Facilities
- 5-Star The Chelsea Harbour Hotel • Blue Harbour Spa
- Chelsea Riverside Brasserie & Bar • Marina • Hairdressing
- Convenience Store • Marcos • Excellent Security

### Local Transport Links:

- Imperial Wharf Station (Overground)
- Under 15 minutes walk to Fulham Broadway (District)
- C3 to Chelsea Harbour; 11, 22 & 14 within a short walk
- Within easy reach of the Kings Road and Embankment
- Taxi Rank at the The Chelsea Harbour Hotel
- River Taxi at Chelsea Harbour Pier



**IMPORTANT NOTICE:** Harbour Estates Limited, its clients and any joint agents give notice that they have no authority to make or give any representations or warranties in relation to this property either here or elsewhere, either on their own behalf or on behalf of their client or otherwise. They assume no responsibility for any statement that may be made in these particulars. These particulars do not form part of any offer or contract and must not be relied upon as statements or representations of fact. Any areas, measurements or distances are approximate. The text, photographs and plans are for guidance only. It should not be assumed that the property has all necessary planning, building regulation or other consents and Harbour Estates Limited has not tested any services, equipment or facilities. A buyer or lessee must satisfy themselves by inspection or otherwise. The copyright of all details, photographs and floor plans remain exclusive to Harbour Estates Limited.