

Aspect Court

Imperial Wharf, London SW6

£720 per week Furnished



Harbour Estates

5 Design Centre East Chelsea Harbour London SW10 0XF
020 73512300 harbourestates.co.uk

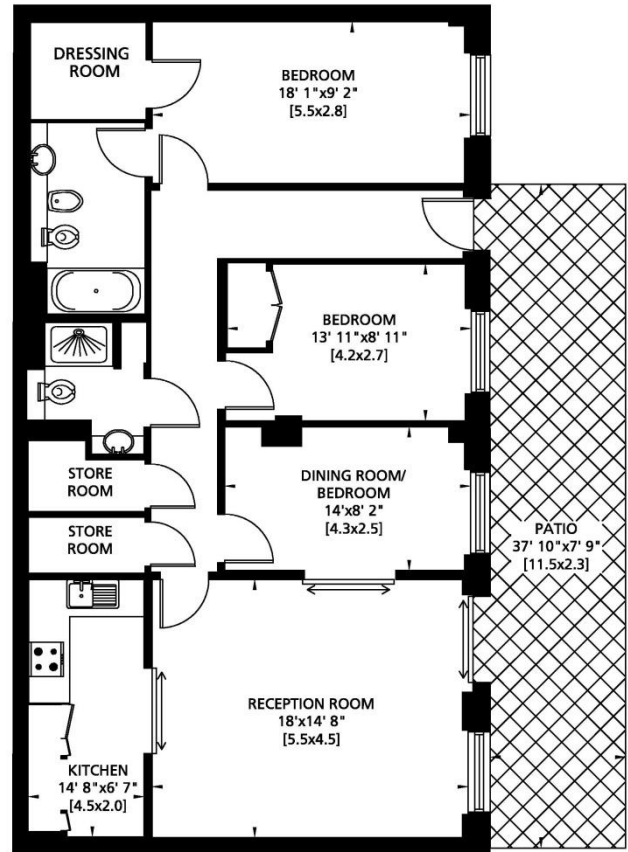
A sensational 2/3 bedroom, ground floor apartment situated in Aspect Court, right in the heart of this award-winning development set on the banks of the River Thames. The property benefits from light, well-proportioned rooms and has its own private access from pretty communal gardens. Imperial Wharf overground station has links to the underground network at West Brompton (District Line) & Shepherds Bush (Central Line).



Entrance Hall • Reception Room • Kitchen • 2 Double Bedrooms • Dining Room/3rd Bedroom
Dressing Room • En Suite Bathroom • Shower Room • 2 Store Rooms • Comfort Cooling (Heating & Cooling)
Patio • Lift • Video Entry Telephone • 24 Hour Concierge & Security Service



Gross Internal Area: 108 Sq. metres
1165 Sq. feet



GROUND FLOOR

Energy Efficiency Rating		Environmental (CO ₂) Impact Rating	
Current	Potential	Current	Potential
Very energy efficient - lower running costs		Very environmentally friendly - lower CO ₂ emissions	
A (92-100)		A (92-100)	
B (81-91)		B (81-91)	
C (69-80)		C (69-80)	
D (55-68)		D (55-68)	
E (39-54)		E (39-54)	
F (21-38)		F (21-38)	
G (1-20)		G (1-20)	
Not energy efficient - higher running costs		Not environmentally friendly - higher CO ₂ emissions	
	71 → 74	62 → 63	
England & Wales	EU Directive 2002/91/EC	England & Wales	EU Directive 2002/91/EC



Imperial Wharf Amenities:

- Riverside Walk • Secure Underground Parking Facilities
- Double Tree by Hilton • Inn Fusion Restaurant and Bar
- Waterside Pub • Restaurants • Residents' Gym • Laundry Service
- 24 Hour Concierge and Security Service

Local Transport Links:

- Imperial Wharf Station (Overground)
- Under 15 minutes walk to Fulham Broadway (District)
- C3, 391 from Imperial Wharf; 424, 22 & 14 within a short walk
- Within easy reach of the Kings Road
- Imperial Wharf Taxi Hail Point
- River Taxi at Chelsea Harbour Pier

IMPORTANT NOTICE: Harbour Estates Limited, its clients and any joint agents give notice that they have no authority to make or give any representations or warranties in relation to this property either here or elsewhere, either on their own behalf or on behalf of their client or otherwise. They assume no responsibility for any statement that may be made in these particulars. These particulars do not form part of any offer or contract and must not be relied upon as statements or representations of fact. Any areas, measurements or distances are approximate. The text, photographs and plans are for guidance only. It should not be assumed that the property has all necessary planning, building regulation or other consents and Harbour Estates Limited has not tested any services, equipment or facilities. A buyer or lessee must satisfy themselves by inspection or otherwise. The copyright of all details, photographs and floor plans remain exclusive to Harbour Estates Limited.