

Fountain House

Imperial Wharf, London SW6

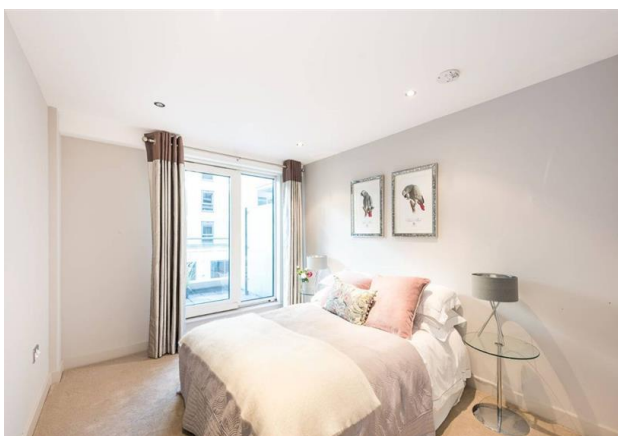
£985,000



Harbour
Estates

5 Design Centre East Chelsea Harbour London SW10 0XF
020 7351 2300 harbourestates.co.uk

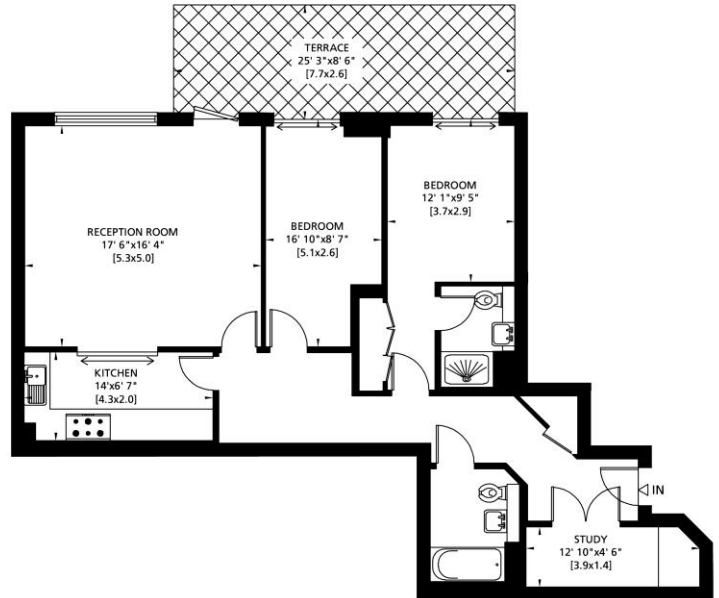
A sensational 2 bedroom, 2nd floor, apartment situated right in the heart of this award-winning development set on the banks of the River Thames. Imperial Wharf is a young, vibrant, development on the Chelsea/Fulham borders which has an eclectic range of restaurants and a vivacious riverside pub and is also conveniently located for Imperial Wharf Overground station with links to the underground at West Brompton (District) and Shepherds Bush (Central).



Entrance Hall • Reception Room • Kitchen • 2 Double Bedrooms
2 Bathrooms (1 En Suite) • Balcony • Comfort Cooling (Heating & Cooling)
Video Entry Telephone • Lift • 24 Hour Concierge & Security Service
To include: Carpets • Curtains/Blinds • Kitchen Fittings, Appliances & Laundry Equipment
Standard Light Fittings



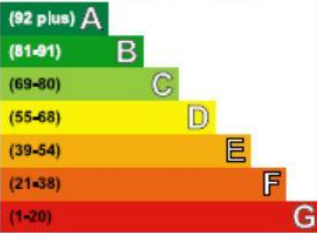
Gross Internal Area: 98 Sq. metres
1052 Sq. feet



FIRST FLOOR

Energy Efficiency Rating

Very energy efficient • lower running costs



Current	Potential
77	80



Lease: 999 years from December 1999
Local Authority: London Borough of Hammersmith & Fulham

Imperial Wharf Amenities:

Riverside Walk • Secure Underground Parking Facilities
Double Tree by Hilton • Inn Fusion Restaurant and Bar
Waterside Pub • Restaurants • Residents' Gym • Laundry Service
24 Hour Concierge and Security Service

Local Transport Links:

- 🚇 Imperial Wharf Station (Overground)
- 🚶 Under 15 minutes walk to Fulham Broadway (District)
- 🚗 C3, 391 from Imperial Wharf; 424, 22 & 14 within a short walk
- 🚏 Within easy reach of the Kings Road
- 🚕 Imperial Wharf Taxi Hail Point
- 🚤 River Taxi at Chelsea Harbour Pier

IMPORTANT NOTICE: Harbour Estates Limited, its clients and any joint agents give notice that they have no authority to make or give any representations or warranties in relation to this property either here or elsewhere, either on their own behalf or on behalf of their client or otherwise. They assume no responsibility for any statement that may be made in these particulars. These particulars do not form part of any offer or contract and must not be relied upon as statements or representations of fact. Any areas, measurements or distances are approximate. The text, photographs and plans are for guidance only. It should not be assumed that the property has all necessary planning, building regulation or other consents and Harbour Estates Limited has not tested any services, equipment or facilities. A buyer or lessee must satisfy themselves by inspection or otherwise. The copyright of all details, photographs and floor plans remain exclusive to Harbour Estates Limited.