

Harbour Reach

Imperial Wharf, London SW6

£899,950



Harbour
Estates

5 Design Centre East Chelsea Harbour London SW10 0XF
020 7351 2300 harbourestates.co.uk

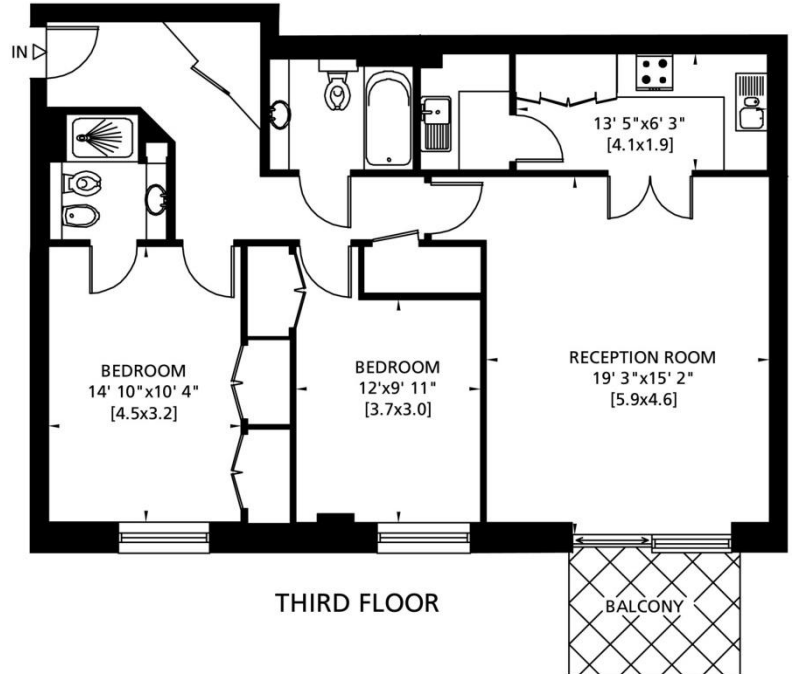
A delightful 2 bedroom, 3rd floor apartment, recently decorated and re-carpeted throughout in neutral style. The property offers bright, well-proportioned accommodation with a balcony overlooking The Boulevard and a section of the river. Imperial Wharf is a fabulous riverside development on the Chelsea/Fulham borders with an overground train station that links to the underground at West Brompton (District line) & Shepherd's Bush (Central line).



Entrance Hall • Kitchen • Utility Room • Reception Room • 2 Double Bedrooms • Shower Room (En Suite)
Guest Bathroom • Balcony • Comfort Cooling (Heating & Cooling) • Video Entry Telephone
Free Residents' Gym • Lift • 24 Hour Concierge & Security Service
To include: Fitted Carpets • Kitchen Fittings, Appliances & Laundry Equipment • Light Fittings



Gross Internal Area: 92 Sq. metres
994 Sq. feet



Energy Efficiency Rating



Lease: 999 years from December 1999
Local Authority: London Borough of Hammersmith & Fulham

Imperial Wharf Amenities:

Riverside Walk • Secure Underground Parking Facilities
Double Tree by Hilton • Inn Fusion Restaurant and Bar
Waterside Pub • Restaurants • Residents' Gym • Laundry Service
24 Hour Concierge and Security Service

Local Transport Links:

- 🚇 Imperial Wharf Station (Overground)
- 🚶 Under 15 minutes walk to Fulham Broadway (District)
- 🚗 C3, 391 from Imperial Wharf; 424, 22 & 14 within a short walk
- 🚶 Within easy reach of the Kings Road
- 🚕 Imperial Wharf Taxi Hail Point
- 🚤 River Taxi at Chelsea Harbour Pier

IMPORTANT NOTICE: Harbour Estates Limited, its clients and any joint agents give notice that they have no authority to make or give any representations or warranties in relation to this property either here or elsewhere, either on their own behalf or on behalf of their client or otherwise. They assume no responsibility for any statement that may be made in these particulars. These particulars do not form part of any offer or contract and must not be relied upon as statements or representations of fact. Any areas, measurements or distances are approximate. The text, photographs and plans are for guidance only. It should not be assumed that the property has all necessary planning, building regulation or other consents and Harbour Estates Limited has not tested any services, equipment or facilities. A buyer or lessee must satisfy themselves by inspection or otherwise. The copyright of all details, photographs and floor plans remain exclusive to Harbour Estates Limited.